

Type H3 Load Cell



Short description



Nickel plated alloy steel IP67 "S" type load cell
Tension and compression applications
Suitable for hanging, hopper and other weighing devices
Also available in imperial capacities and dimensions



test certificate no. D09-03.18 Revision 2
C of C no R60/2000-CNI-00.01



Certificate no. 06-099A1

Available models

| Capacity | Accuracy | Full article description |
|----------|-----------------------|--------------------------|
| 25kg | C3 Excluded from OIML | H3-C3-25kg-3B |
| 50kg | C3 Excluded from OIML | H3-C3-50kg-3B |
| 100kg | C3/C4 | H3-C3/C4-100kg-3B |
| 150kg | C3/C4 | H3-C3/C4-150kg-3B |
| 200kg | C3/C4 | H3-C3/C4-200kg-3B |
| 250kg | C3/C4 | H3-C3/C4-250kg-3B |
| 300kg | C3/C4 | H3-C3/C4-300kg-3B |
| 500kg | C3/C4 | H3-C3/C4-500kg-3B |
| 600kg | C3/C4 | H3-C3/C4-600kg-3B |
| 750kg | C3/C4 | H3-C3/C4-750kg-3B |
| 1t | C3/C4 | H3-C3/C4-1t-3B |
| 1.5t | C3/C4 | H3-C3/C4-1.5t-3B |
| 2t | C3/C4 | H3-C3/C4-2t-6B |
| 2.5t | C3/C4 | H3-C3/C4-2.5t-6B |
| 3t | C3 Excluded from OIML | H3-C3-3t-6B |
| 5t | C3 Excluded from OIML | H3-C3-5t-6B |
| 7.5t | C3 Excluded from OIML | H3-C3-7.5t-6B |
| 10t | C3 Excluded from OIML | H3-C3-10t-6B |
| 15t | C3 Excluded from OIML | H3-C3-15t-6B |
| 20t | C3 Excluded from OIML | H3-C3-20t-6B |
| 30t | C3 Excluded from OIML | H3-C3-30t-6B |

Type H3 Load Cell

Detailed specifications H3

1145/10 Sk. No:4 Yenışehir/Konak/İZMİR * info@megatarti.com * www.megatarti.com * 0232 433 10 70

| Accuracy class | | OIML R60 C3 | OIML R60 C4 | C3 |
|--|---|--|--|----------------|
| Output sensitivity (= FS) | mV/V | 2.0 ± 0.004 | | |
| Maximum capacity (E _{max}) | t | 0.1, 0.15, 0.2, 0.25, 0.3, 0.5, 0.6, 0.75, 1, 1.5, 2, 2.5 | 0.025, 0.05, 3.0, 5.0, 7.5, 10, 15, 20, 30 | |
| Max.number of load cell intervals | n _{LC} | 3000 | 4000 | 3000 |
| Ratio of min. LC verification interval | Y = E _{max} / V _{min} | 10000 | 20000 | 10000 |
| Combined Error | %FS | ≤± 0.020 | ≤± 0.018 | ≤± 0.020 |
| Minimum dead load | Of E _{max} | 0% | | |
| Safe overload | of E _{max} | 150 % | | |
| Ultimate overload | of E _{max} | 300 % | | |
| Zero balance | of FS | < ± 1.5 % | | |
| Excitation, recommended voltage | V | 5 ~ 12 | | |
| Excitation maximum | V | 18 | | |
| Input resistance | Ω | 350 ± 3.5 | | |
| Output resistance | Ω | 351 ± 2.0 | | |
| Insulation resistance | MΩ | ≥5000 (at 50VDC) | | |
| Compensated temperature | °C | -10 ~+40 | | |
| Operating temperature | °C | -35 ~ +65 | | |
| Storage temperature | °C | -40 ~ +70 | | |
| Element material | | Nickel plated alloy steel | | |
| Ingress Protection (acc. to EN 60529) | | IP67 | | |
| Recommended torque on fixation | Nm | M8:25 M10: 50 M12:75 M20:450 M33:750 M42:1450 | | |
| ATEX classification (optional) | | II1G Ex ia II1C T4 | II1D Ex iaD 20 T73°C | II3G nL IIC T4 |

Wiring

Wiring:

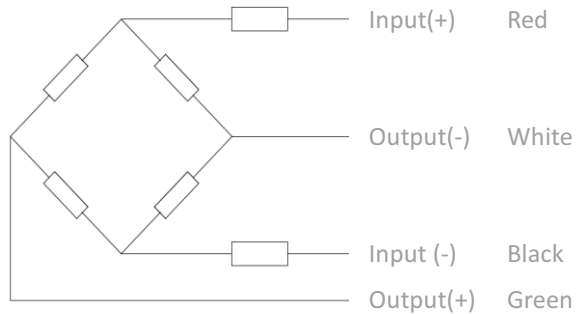
Shielded, 4 conductor cable.

Cable diameter: Ø5mm

Standard cable length for 25kg – 1.5t: 3m and for 2t – 30t: 6m.

Shield not connected to element.

4-wire diagram

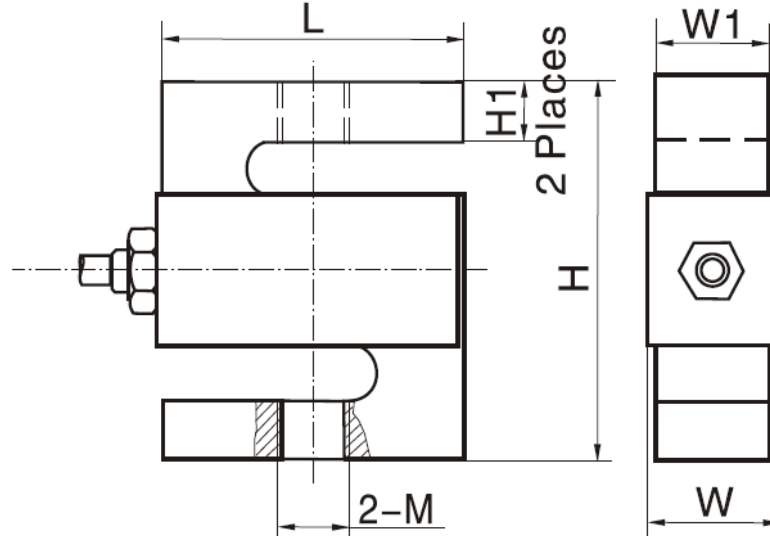


Type H3 Load Cell

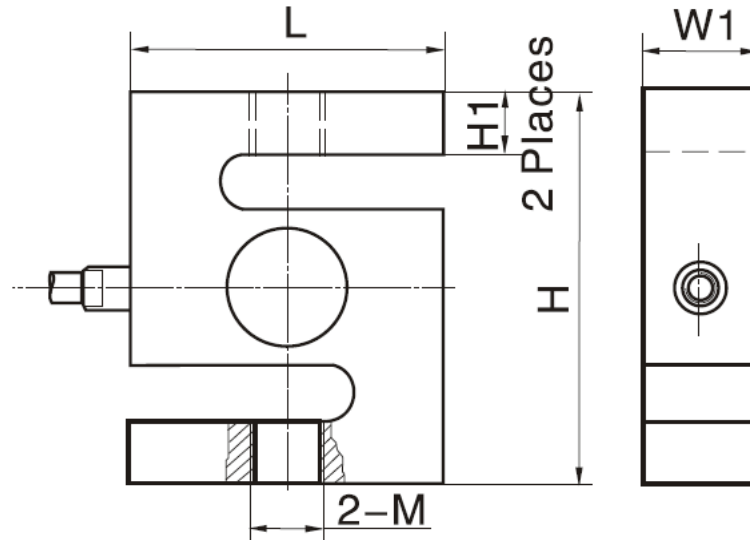
Dimensions in mm

1145/10 Sk. No:4 Yenışehir/Konak/IZMLR * info@megatarti.com * www.megatarti.com * 0232 433 10 70

25kg-5t 0.1-20Klb



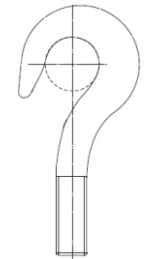
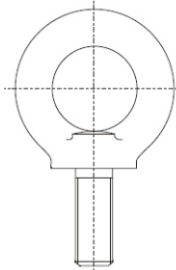
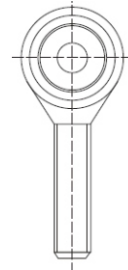
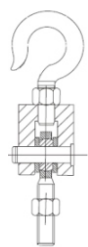
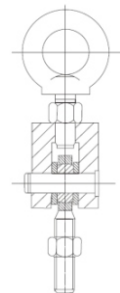
7.5t-30t



| Dimension Capacity | L | H | W1 | W | H1 | M |
|--------------------|------|-------|------|------|------|------------|
| 25-50kg | 50.8 | 76.2 | 12.7 | 14.5 | 15.7 | M8 |
| 100-150kg | 50.8 | 76.2 | 19.0 | 20.8 | 15.3 | M10 x 1.5 |
| 200-750kg | 50.8 | 76.2 | 19.0 | 20.8 | 13.6 | M12 x 1.75 |
| 1-1.5t | 50.8 | 76.2 | 25.4 | 27.2 | 12.1 | M12 x 1.75 |
| 2-5t | 76.2 | 101.6 | 25.4 | 27.2 | 20 | M20 x 1.5 |
| 7.5-10t | 125 | 175 | 50 | - | 40.2 | M33 x 3 |
| 15-20t | 160 | 200 | 60 | - | 51 | M42 x 3 |
| 30t | 190 | 230 | 80 | - | 57.5 | M42 x 3 |

Type H3 Load Cell

Available accessories

| | |
|---|---|
| <p>HL-3-001-25kg-5t hook Alloy Steel Suitable for hybrid scales, crane scales, packaging scales and hopper scales</p> |  |
| <p>HL-3-002-25kg-5t eye Alloy Steel Suitable for hybrid scales, crane scales, packaging scales and hopper scales</p> |  |
| <p>HL-3-003-25kg-5t rod end Alloy Steel Suitable for hybrid scales, crane scales, packaging scales, hopper scales and other electronic weighing devices.</p> |  |
| <p>HL-3-004-25kg-5t hook assembly Alloy Steel Suitable for hybrid scales, crane scales, packaging scales, hopper scales and other electronic weighing devices.</p> |  |
| <p>HL-3-005-25kg-5t eye assembly Alloy Steel Suitable for hybrid scales, crane scales, packaging scales, hopper scales and other electronic weighing devices.</p> |  |